

GIS Center

Geospatial Analysis,
Consultation, and Training



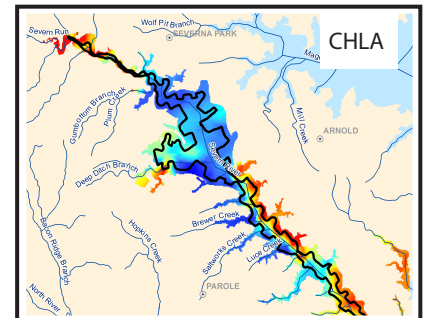
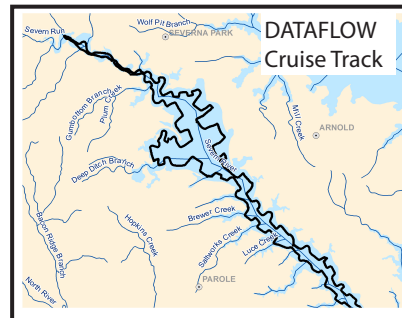
University of Maryland
CENTER FOR ENVIRONMENTAL SCIENCE
CHESAPEAKE BIOLOGICAL LABORATORY

Contact:

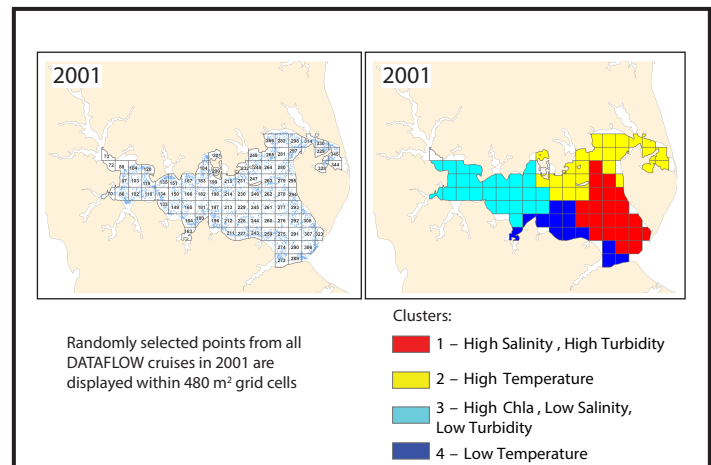
- Lisa Wainger (wainger@umces.edu)
- Alynne Bayard (bayard@umces.edu)

Services

- **Data Visualization**
Cartographic and figure design for manuscripts, reports and presentations
- **Data importing and translating**
- **Data acquisition and processing from external sources**
- **Database design, development, organization, and/or clean-up**
- **Spatial Analysis**
(interpolation and modeling)



Observations from ship-mounted sensor (left) are interpolated to create a continuous surface of chla using kriging.



Dominant water quality patterns are mapped based on cluster analysis.

Prices

Standard:

- Data visualization and processing
- Simple Interpretation
- One-on-one training

\$35/hr - In house

\$50/hr - State

\$55/hr - Private and Federal

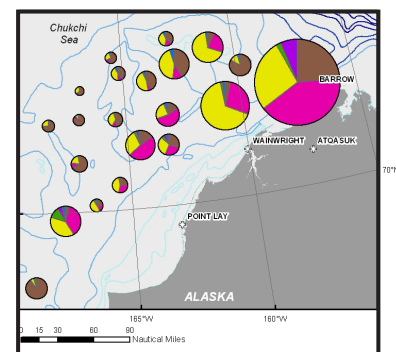
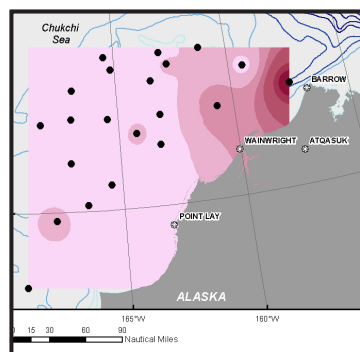
Analysis:

- Advanced data analysis
- Spatial statistical modeling

\$45/hr - In house

\$60/hr - State

\$65/hr - Private and Federal



Total abundance of animal communities in the Chukchi and Bering seas are represented by interpolation (left) and pie charts.